

Datasheet

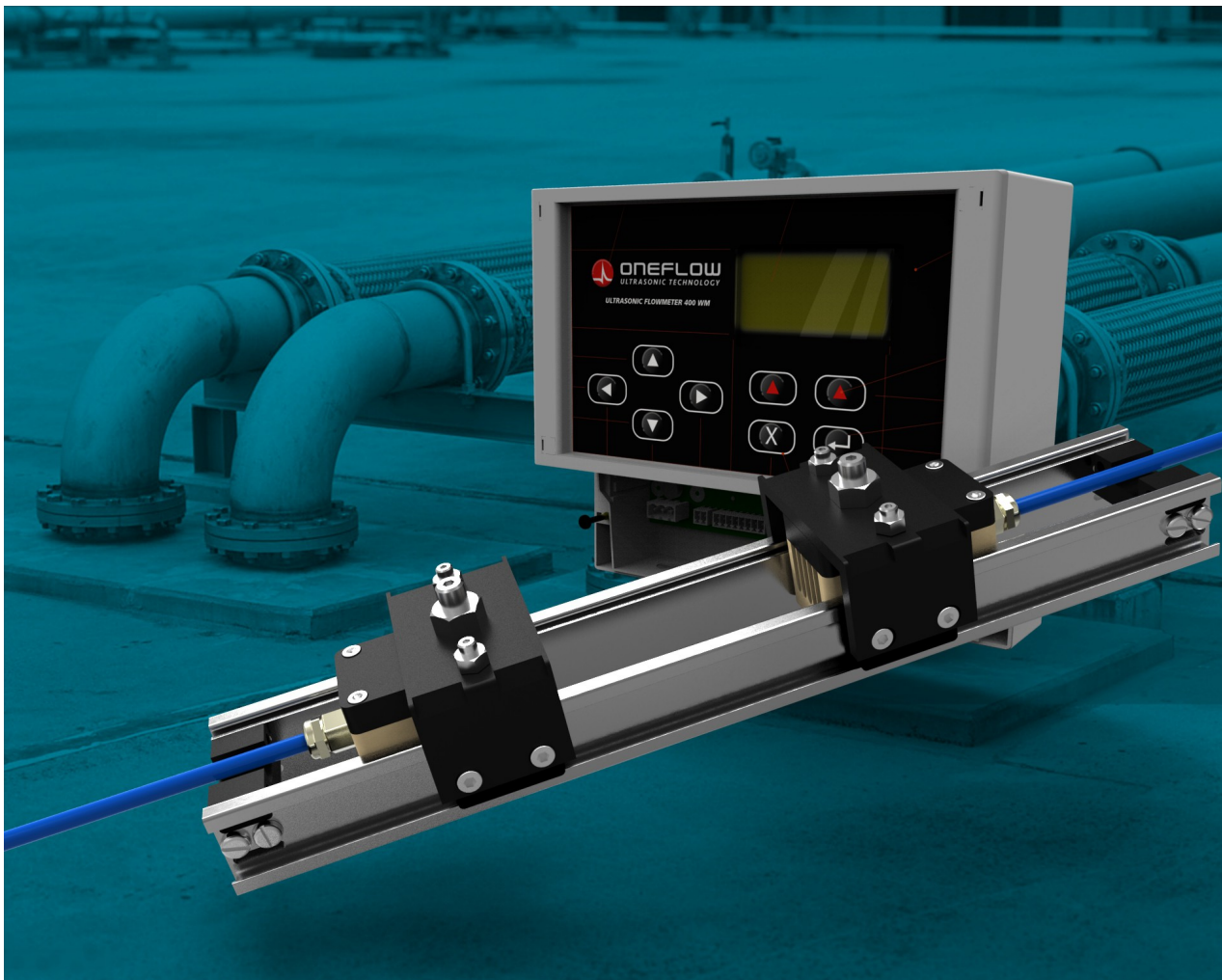
400-WM Portable

Ultrasonic Flowmeter

vr 1.0a, November 2016.



THE ONEFLOW 400-PF IS A HIGH PERFORMANCE WALL MOUNTED CLAMP-ON ULTRASONIC FLOWMETER INTENDED FOR SINGLE PHASE FLOW MEASUREMENT USING THE TRANSIT-TIME DIFFERENCE TECHNIQUE & ADVANCED DIGITAL SIGNAL PROCESSING.



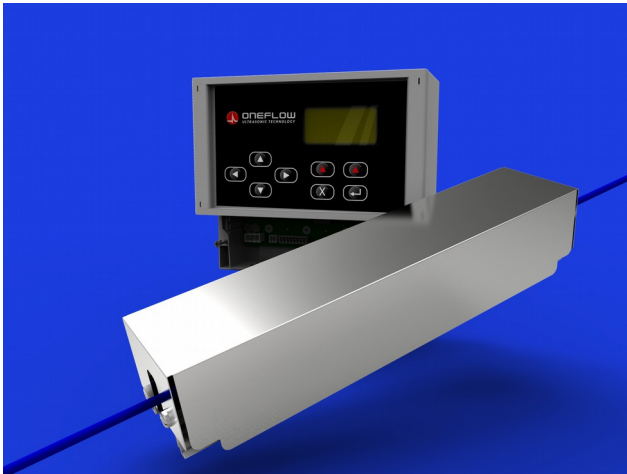
www.1-flow.co.uk sales@1-flow.co.uk

ONEFLOW TECHNOLOGIES LTD. 4 Devon Units, Budlake Road, Marsh Barton Trading Estate, Exeter, EX2 8PY.
Tel: +44 (0)1392 829926.

Datasheet

**400-WM Portable
Ultrasonic Flowmeter**

vr 1.0a, November 2016.



SPECIFICATIONS

- Wall mounted IP65 Housing and IP68 Sensors
- Rechargeable lithium polymer 3.7 V, 1000 mAh battery for power failures
- Outstanding flow rate measurement performance.
- USB Connection, download data directly to a USB Stick (< 32 GB).
- Remote Firmware update, Date Transfer
- 32Mbit Data Logger
- High contrast 128 x 64 pixel back lit LED display 70 x 40 mm Screen

CONNECTIONS – MUST BE WIRED BY QUALIFIED ELECTRICIAN AS IT CAN INVOLVE MAINS ELECTRICITY.

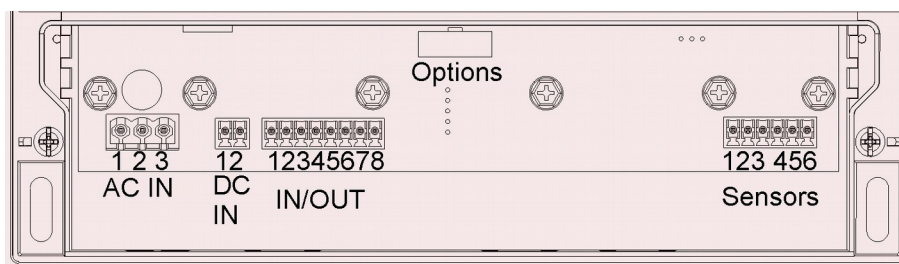


Illustration 1: 400-WM Connections

Datasheet

**400-WM Portable
Ultrasonic Flowmeter**

vr 1.0a, November 2016.



CONNECTOR	DESCRIPTION
AC IN (J12)	
1	NOT CONNECTED
2	L1 - LIVE
3	L2 - NEUTRAL
DC IN (J16)	
1	DC GND
2	DC+ (6.5 – 30 V DC)
IN/OUT (J11)	
Communications 1 x Current Output (Scalable Isolated 4-20mA), 1 x Configurable Opto-Isolated (PULSE/FREQ) Relay. 1 x Comms (Relay and RS232)	
1	4-20mA IN +
2	4-20mA IN-
3	GND
4	FREQUENCY OUT F-
5	FREQUENCY OUT F+
6	GND
7	RS232 RX
8	RS232 TX
OPTIONS	Reserved for optional plug in components such as the dual temperature board (for energy flow)
SENSORS (J10)	
1	SENSOR CHANNEL B -
2	SENSOR CHANNEL B +
3	SHIELD GROUND (CHANNEL A)

Datasheet

**400-WM Portable
Ultrasonic Flowmeter**

vr 1.0a, November 2016.



4	SENSOR CHANNEL A -
5	SENSOR CHANNEL A+
6	SENSOR SHIELD GROUND (CHANNEL A)
TYPE A Mini USB Connector (not shown) for data download.	

Please note: Cable ends are prepared before leaving the factory, the triaxial cable has heatshrink with standard wire to aid wiring unit.

Performance Specifications

Flow Measuring principle: Complete coded signal correlation measuring transit time difference
Range Bi-directional up to 25 m/sec
Processor electronics resolution: Typically 0.01×10^9 seconds For water and different pipe bores this equates to:

Pipe bore [mm]	50	200	1000
Velocity[mm/sec]	0.300	0.075	0.015
Flow[litre/sec]	0.001	0.003	0.012

Overall resolution: Defined as still water noise time difference, typically 0.2×10^9 seconds to peak.
For water and different pipe bores this equates to:

Pipe bore [mm]	50	200	1000
Velocity [mm/sec]	6	1.5	0.3
Flow rate [litre/sec]	0.01	0.05	0.23

Zero bias: Time difference for zero flow with internally smooth pipes typically better than 1×10^9 seconds For water and different pipe bores this equates to:

Pipe bore [mm]	50	200	1000
Velocity [mm/sec]	30	15	1.5
Flow [litre/sec]	0.06	0.24	1.2

If greater accuracy is required, the zero bias can be eliminated by a zero flow check on installation.
Repeatability: Without moving sensors, typically $\pm 0.15\%$ of reading

Accuracy for fully developed and symmetrical flow

Accuracy without process calibration	$\pm 1 - 2\%$ of reading + zero bias
Accuracy with process calibration	$\pm 0.5\%$ of reading + zero bias

Datasheet

400-WM Portable Ultrasonic Flowmeter

vr 1.0a, November 2016.



Speed of Sound Measuring principle: Completed coded signal correlation measuring mean transit time during normal operation.

Range 800 to 2,000 m/sec	Accuracy <0.25% read value	Resolution 2 mm/sec
--------------------------	----------------------------	---------------------

Wall thickness Gauge

Measuring principle Complete coded signal correlation measuring echo reflection times. Uses separate (optional) thickness transducer.

Range Metallic pipe: 2 - 50 mm	Plastic pipe: 2 - 30 mm	Accuracy 0.1 mm	Resolution 0.05 mm
--------------------------------	-------------------------	-----------------	--------------------

Temperature Measuring principle: External input from 2 channel 4 - 20mA temperature sensors

Range -40 to 150°C	Accuracy 1% of reading	Resolution 0.1°C
--------------------	------------------------	------------------

Factory Calibration available. This function (Energy flow measurement) is available separately using the options port and using the Two channel RTD Input Board (OPB2RTD).

Fluids Types

Sonically Conductive

Sediment/Air levels < 20% but volumetric fluid flow will not be accurate with entrained sediment/air

Pipe Material Metals, glass, and sonically conductive homogeneous polymers/plastics
Lining Bitumen, glass, epoxy paint and most concrete liners. Excludes loose liners

Operational

Languages [Programmable through new software update – please consult factory for new translations]:
English.

Units Selectable: Feet, meters, ml, litres, m³, ft³, pints, gallons, US gallons, seconds, minutes, hours, days. Plus user defined units and time. Input units in metric and Imperial.

Power Supply: 3.7V 4.2Ah Internal Battery Rechargeable (5 hour recharge) - lithium polymer batteries
Battery life, (nominal) Standard: 16 hours continuous use (LCD on, back-light on).

External Controls: RS232 (8 data, 1 stop bit, none] baud rate up to 115200
Inputs Transit Time Sound Speed 2 sensors, single channel

1 x Analogue 4-20mA isolated current output. Choice of output under software control so can be set to any parameter measured by flowmeter, range, scale and window

Totaliser (pulse) Alarm 1 x opto-isolated relay. 60 V, 1500 V isolation. Choice of output under software control, 1 KHz max

Site Information: 16 separate sites. Data rate, start/stop times, RTC setting

Settings: 4 Hz standard update rate, with user set moving average (1 - 360 seconds).

Logging interval: User set from 1 - 9999 seconds and average over period is logged

Display Type: 128 x 64 pixel LCD graphic. Blue LED Back-light.

www.1-flow.co.uk sales@1-flow.co.uk

ONEFLOW TECHNOLOGIES LTD. 4 Devon Units, Budlake Road, Marsh Barton Trading Estate, Exeter, EX2 8PY.
Tel: +44 (0)1392 829926.

Datasheet

400-WM Portable Ultrasonic Flowmeter

vr 1.0a, November 2016.



Data Points: Alpha-numeric and Graphics display output, graphs and logging traces

Logging 32 Mbit: Universal multi-point data-logger, 416,900 records
e.g. flow and Date/time

Keypad: 9 keys, On/Off on Keypad

External Connections:

Military & Industrial Specification connectors are used throughout – Ensure protective caps are fully screwed on with when a connector is not used.

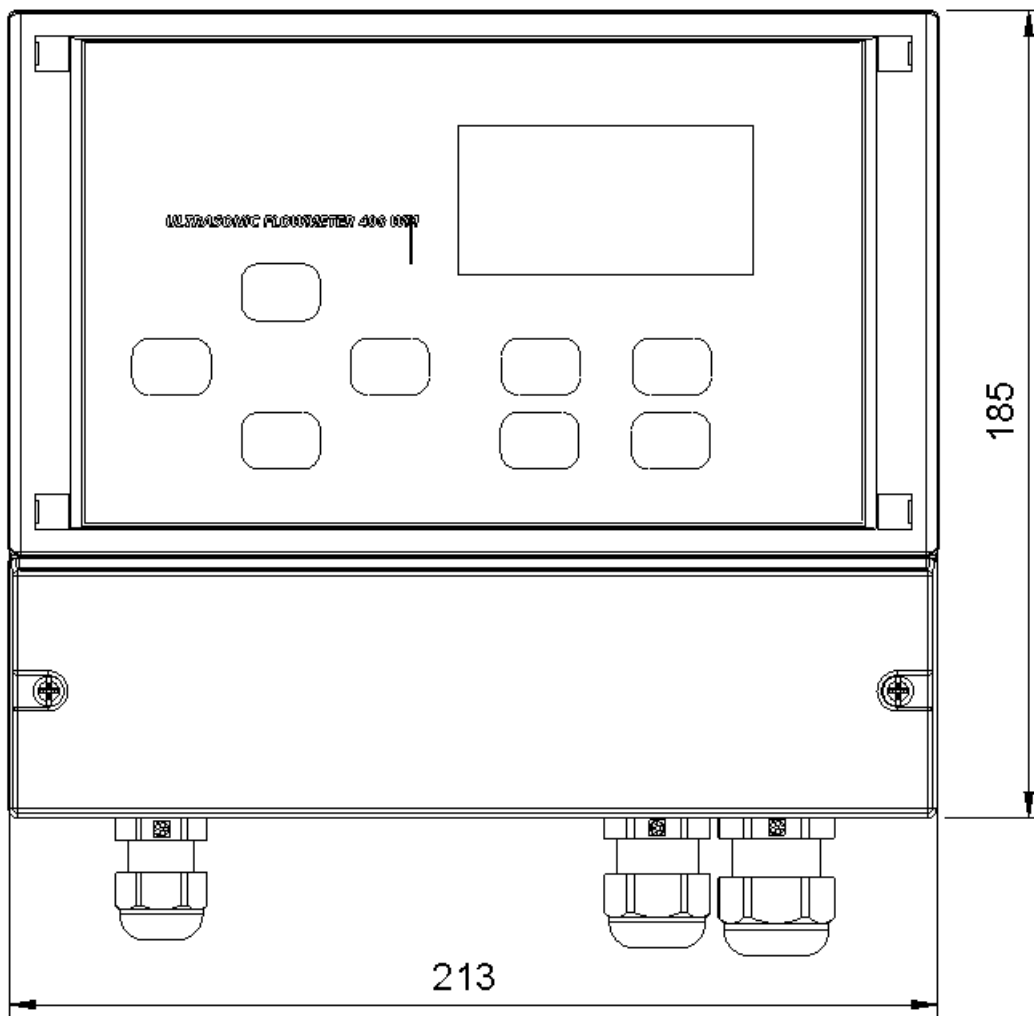
Physical

TEMPERATURE SPECIFICATION		
Temperature Range	Low Temperature [°C]	High Temperature [°C]
Transducer (Standard SENS-STD-XXX, Mini, SENS-MINI-XXX) * Note: Pipe Temperature, with ambient surroundings can then be +200°C (maximum).	-40	+120 * Note.
Sensor Cable	-20	+80
400-WM Electronics unit	-10	+50
Storage Temperature Transducers	-40	+120
Storage 400-PF Electronics unit	-20	+50
INGRESS PROTETION RATING SPECIFICATION		
Transducer & Cable	IP68	
400-WM Electronics Unit & Connectors	IP65 (ensure USB cap is tightened)	
CABLE LENGTHS		
Standard Sensor length	2.9 metres	
Optional length (specify when ordering) SENS-STD-1MHz-XXM (where XX = length in metres)	5m, 10m, 15m, 25m. (consult factory for other requirements)	
TRANSDUCER MOUNTING OPTIONS		
Rail mounting with chains for from 13mm diameter up to 2000+ mm. Chains for larger pipes with alternative magnetic blocks for ferrous metal pipes. Permanent rail (with protective cover) also available using 'jubilee' permanent straps.		
PHYSICAL DIMENSIONS		
Dimensions 400 Series Control Unit	182 x 115 x 34 mm	
Shipping Weight	2 kg.	
PHYSICAL MATERIALS		
400-WM unit: ABS plastic. Transducers PEEK and Acetal with aluminium/stainless steel mounting block/rails. All materials corrosion resistant in most outdoor applications (not Marine).		

Datasheet
400-WM Portable
Ultrasonic Flowmeter
vr 1.0a, November 2016.



DIMENSIONS.



(PLEASE NOTE USB CONNECTOR NOT SHOWN).

Datasheet

400-WM Portable

Ultrasonic Flowmeter

vr 1.0a, November 2016.



Kit contents

- 1 x Main Electronics units
- 1 x pair of sensors
- 1 x clamping rail
- 1 x 250 mL water based couplant
- 1 x 4GB USB stick with manuals and calibration certificate.
- 1 x bubble level
- 1 x 5 metre retractable tape measure

Many thanks for taking the time to read this data-sheet and considering a ONEFLOW Technologies product. Please contact us or one of our representatives for further information.