

Datasheet

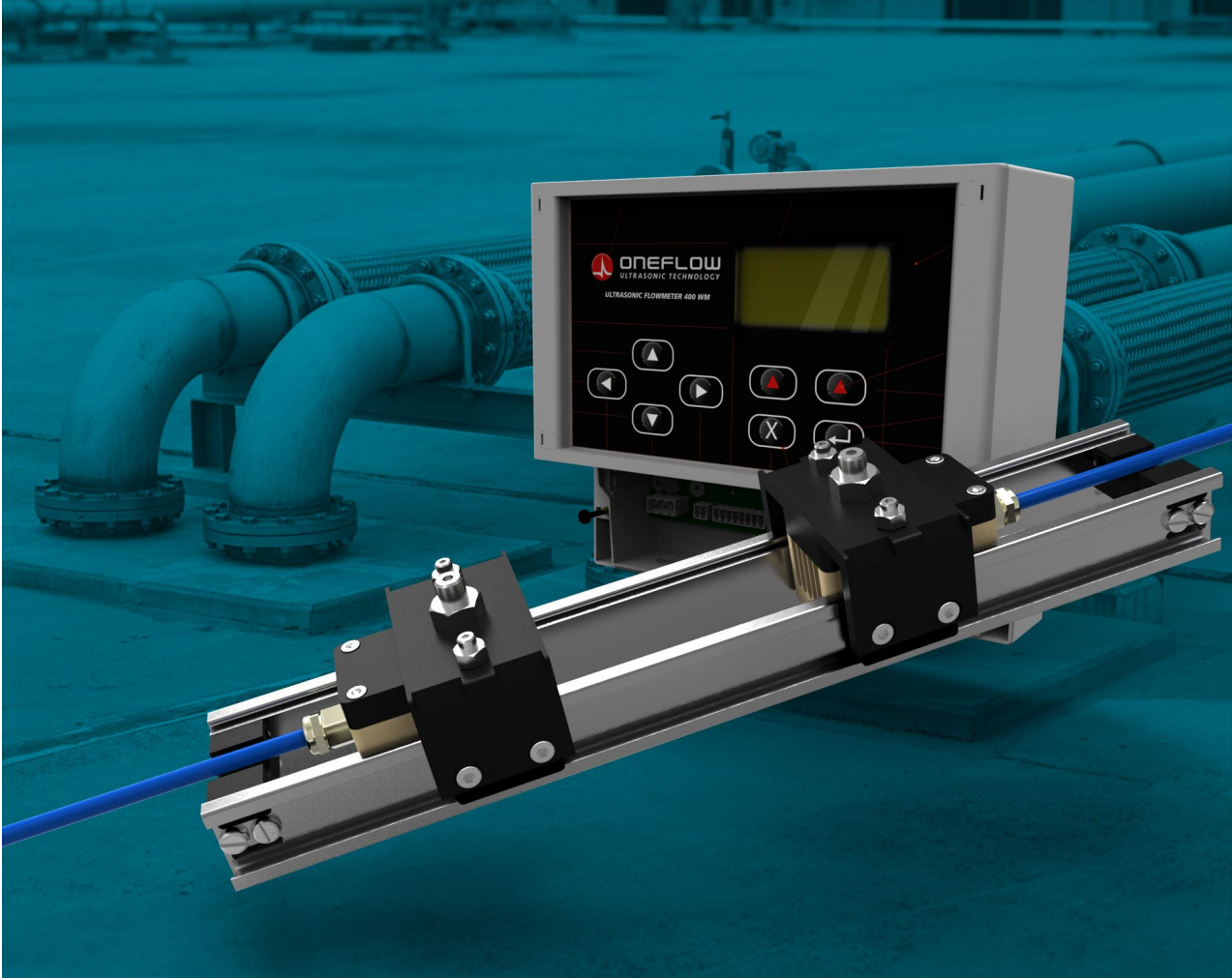
400-WM Portable

Ultrasonic Flowmeter

vr 1.0a, 9/12/2016.



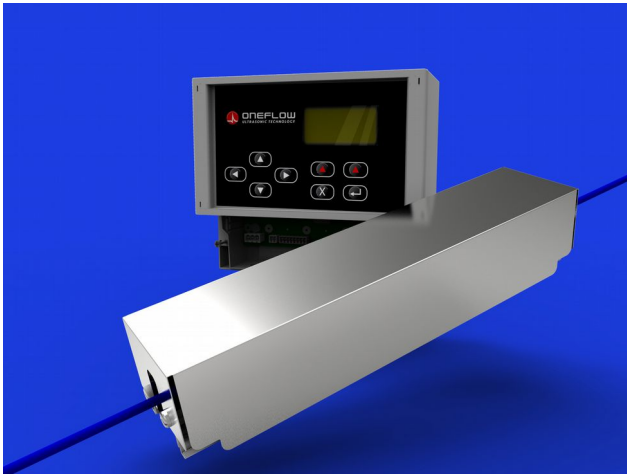
THE ONEFLOW 400-PF IS A HIGH PERFORMANCE WALL MOUNTED CLAMP-ON ULTRASONIC FLOWMETER INTENDED FOR SINGLE PHASE FLOW MEASUREMENT USING THE TRANSIT-TIME DIFFERENCE TECHNIQUE & ADVANCED DIGITAL SIGNAL PROCESSING.



Datasheet

400-WM Portable Ultrasonic Flowmeter

vr 1.0a, 9/12/2016.



SPECIFICATIONS

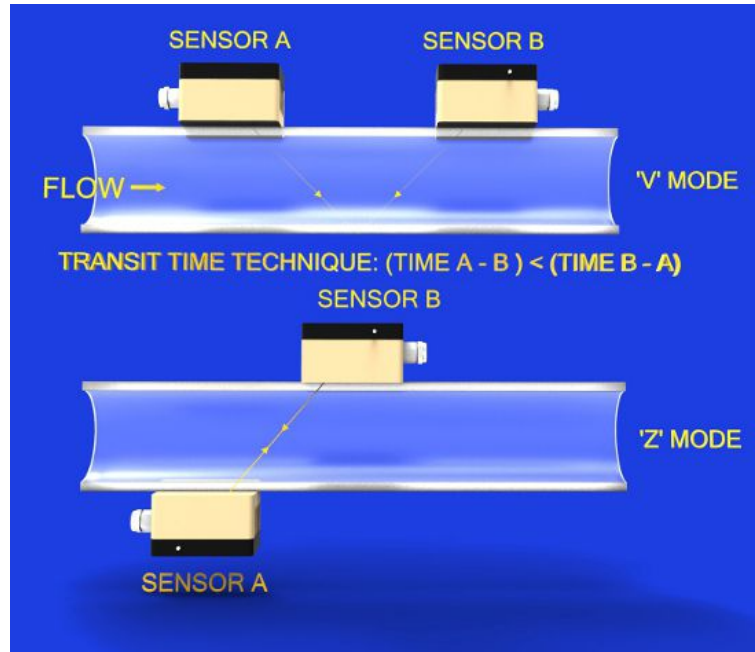
- Wall mounted IP65 Housing and IP68 Sensors
- Rechargeable lithium polymer 3.7 V, 1000 mAh battery for power failures
- Outstanding flow rate measurement performance.
- USB Connection, download data directly to a USB Stick.
- Remote Firmware update, Data Transfer
- 32Mbit Data Logger
- High contrast 128 x 64 pixel back lit LED display

Introduction to the transit-time difference technique.

The flowmeter uses the transit-time difference technique that is a well proven pulse-echo system, where ultrasonic pulses are transmitted between two clamp-on sensors. In a flowing pipe, the downstream pulse-echo travels faster than the upstream echo and a small time shift is measured by state of the art digital electronics. This small time shift or transit-time difference is then translated into the flow based on the information provided by the operator. If the sensors are on the same side of the pipe the ultrasonic wave pulse travels to the far side of the pipe and back, tracing a V shape - V mode and on opposite sides of the pipe, where the pulse travels directly between opposing sensors – Z mode. When setting up you need to know the pipe material, the diameter, the fluid & the pipe wall thickness (you can measure the circumference and use a thickness gauge to measure wall thickness). The flow meter will then calculate the separation of the sensors and they then need to be installed. The meter will then do all the necessary calculations and measure & log the flow rates.

Datasheet
400-WM Portable
Ultrasonic Flowmeter

vr 1.0a, 9/12/2016.



The transit-time equation is;

$$Flow = \frac{\Delta t * c^2 * K}{2 * D * \tan(\theta)}$$

Δt is the transit-time difference

c – Fluid sound speed (calculated by the flow meter)

K – Flow profile correction factor based on the Reynolds number, fluid viscosity & density

D – Internal pipe diameter

θ – Angle from the pipe normal (90° to the flow direction).

The flowmeter works best on single phase fluids, but will tolerate entrained particulates and air. The device has powerful transmit and receive electronics and advanced sensors that recover very small signals. The overall accuracy tends to be 2-3 % in most installations, but results of 1% are possible with in-situ calibration. Sensors are handcrafted and built into pairs that have excellent long term stability and zero error has been minimised through careful design and manufacture. The best materials are used throughout, starting with the PEEK transducer bodies. This material is exceptionally rugged, having one of the highest melting points of any thermoplastic.

**400-WM Portable
Ultrasonic Flowmeter**

vr 1.0a, 9/12/2016.



CONNECTIONS – WARNING - MUST BE INSTALLED BY A QUALIFIED ELECTRICIAN AS THE UNIT HAS 220-240 Volt AC input.

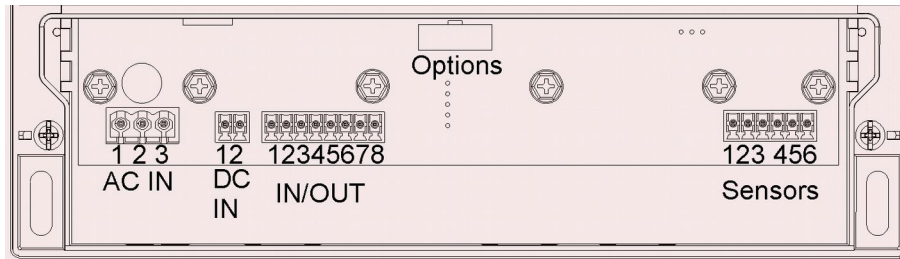


Illustration 1: 400-WM Connections

CONNECTOR	DESCRIPTION
AC IN (J12)	
1	NOT CONNECTED
2	L1 - LIVE
3	L2 - NEUTRAL
DC IN (J16)	
1	DC GND
2	DC+ (6.5 – 30 V DC)
IN/OUT (J11)	
Communications 1 x Current Output (Scalable Isolated 4-20mA), 1 x Configurable Opto-Isolated (PULSE/FREQ) Relay. 1 x Comms (Relay and RS232)	
1	4-20mA IN +
2	4-20mA IN-
3	GND
4	FREQUENCY OUT F-
5	FREQUENCY OUT F+
6	GND
7	RS232 RX
8	RS232 TX
OPTIONS	Reserved for optional plug in components such as the dual temperature board (for energy flow)
SENSORS (J10)	
1	SENSOR CHANNEL B -
2	SENSOR CHANNEL B +

Datasheet

**400-WM Portable
Ultrasonic Flowmeter**

vr 1.0a, 9/12/2016.



3	SHIELD GROUND (CHANNEL A)
4	SENSOR CHANNEL A -
5	SENSOR CHANNEL A+
6	SENSOR SHIELD GROUND (CHANNEL A)
TYPE A Mini USB Connector (not shown) for data download.	

Please note: Cable ends are prepared before leaving the factory to aid wiring leads into the unit.

Performance Specifications

Flow Measuring principle: Complete coded signal correlation measuring transit time difference
Range Bi-directional up to 25 m/sec

Processor electronics resolution: Typically 0.01×10^9 seconds For water and different pipe bores this equates to:

Pipe bore [mm]	50	200	1000
Velocity[mm/sec]	0.300	0.075	0.015
Flow[litre/sec]	0.001	0.003	0.012

Overall resolution: Defined as still water noise time difference, typically 0.2×10^9 seconds to peak.
For water and different pipe bores this equates to:

Pipe bore [mm]	50	200	1000
Velocity [mm/sec]	6	1.5	0.3
Flow rate [litre/sec]	0.01	0.05	0.23

Zero bias: Time difference for zero flow with internally smooth pipes typically better than 1×10^9 seconds For water and different pipe bores this equates to:

Pipe bore [mm]	50	200	1000
Velocity [mm/sec]	30	15	1.5
Flow [litre/sec]	0.06	0.24	1.2

If greater accuracy is required, the zero bias can be eliminated by a zero flow check on installation.
Repeatability: Without moving sensors, typically $\pm 0.15\%$ of reading

Accuracy for fully developed and symmetrical flow

Accuracy without process calibration	$\pm 1 - 2\%$ of reading + zero bias
Accuracy with process calibration	$\pm 0.5\%$ of reading + zero bias

Datasheet

400-WM Portable Ultrasonic Flowmeter

vr 1.0a, 9/12/2016.



Speed of Sound Measuring principle: Completed coded signal correlation measuring mean transit time during normal operation.

Range 800 to 2,000 m/sec	Accuracy <0.25% read value	Resolution 2 mm/sec
--------------------------	----------------------------	---------------------

Wall thickness Gauge

Measuring principle Complete coded signal correlation measuring echo reflection times. Uses separate (optional) thickness transducer.

Range Metallic pipe: 2 - 50 mm	Plastic pipe: 2 - 30 mm	Accuracy 0.1 mm	Resolution 0.05 mm
--------------------------------	-------------------------	-----------------	--------------------

Temperature Measuring principle: External input from 2 channel 4 - 20mA temperature sensors

Range -40 to 150°C	Accuracy 1% of reading	Resolution 0.1°C
--------------------	------------------------	------------------

Factory Calibration available. This function (Energy flow measurement) is available separately using the options port and using the Two channel RTD Input Board (OPB2RTD).

Fluids Types

Sonically Conductive

Sediment/Air levels < 20% but volumetric fluid flow will not be accurate with entrained sediment/air

Pipe Material Metals, glass, and sonically conductive homogeneous polymers/plastics
Lining Bitumen, glass, epoxy paint and most concrete liners. Excludes loose liners

Operational

Languages [Programmable through new software update – please consult factory for new translations]:
English.

Units Selectable: Feet, meters, ml, litres, m³, ft³, pints, gallons, US gallons, seconds, minutes, hours, days. Plus user defined units and time. Input units in metric and Imperial.

Power Supply: 3.7V 4.2Ah Internal Battery Rechargeable (5 hour recharge) - lithium polymer batteries
Battery life, (nominal) Standard: 16 hours continuous use (LCD on, back-light on).

External Controls: RS232 (8 data, 1 stop bit, none] baud rate up to 115200
Inputs Transit Time Sound Speed 2 sensors, single channel

1 x Analogue 4-20mA isolated current output. Choice of output under software control so can be set to any parameter measured by flowmeter, range, scale and window

Totaliser (pulse) Alarm 1 x opto-isolated relay. 60 V, 1500 V isolation. Choice of output under software control, 1 KHz max

Site Information: 16 separate sites. Data rate, start/stop times, RTC setting

Settings: 4 Hz standard update rate, with user set moving average (1 - 360 seconds).

Logging interval: User set from 1 - 9999 seconds and average over period is logged

Display Type: 128 x 64 pixel LCD graphic. Blue LED Back-light.

Datasheet**400-WM Portable
Ultrasonic Flowmeter**

vr 1.0a, 9/12/2016.



Data Points: Alpha-numeric and Graphics display output, graphs and logging traces

Logging 32 Mbit: Universal multi-point data-logger, 416,900 records
e.g. flow and Date/time

Keypad: 9 keys, On/Off on Keypad

External Connections:

Military & Industrial Specification connectors are used throughout – Ensure protective caps are fully screwed on with when a connector is not used.

Physical

TEMPERATURE SPECIFICATION		
Temperature Range	Low Temperature [°C]	High Temperature [°C]
Transducer (Standard SENS-STD-XXX, Mini, SENS-MINI-XXX) * Note: Pipe Temperature, with ambient surroundings can then be +200°C (maximum).	-40	+120 * Note.
Sensor Cable	-20	+80
400-WM Electronics unit	-10	+50
Storage Temperature Transducers	-40	+120
Storage 400-PF Electronics unit	-20	+50
INGRESS PROTETION RATING SPECIFICATION		
Transducer & Cable	IP68	
400-WM Electronics Unit & Connectors	IP65 (ensure USB cap & all cable glands are tightened)	
CABLE LENGTHS		
Standard Sensor length	2.9 metres	
Optional length (specify when ordering) SENS-STD-1MHz-XXM (where XX = length in metres)	5m, 10m, 15m, 25m. 100 Metre MAXIMUM. Please consult factory for any other special requirements.	
TRANSDUCER MOUNTING OPTIONS		
Rail mounting with chains for from 13mm diameter up to 2000+ mm. Chains for larger pipes with alternative magnetic blocks for ferrous metal pipes. Permanent rail (with protective cover) also available using 'jubilee' permanent straps.		
PHYSICAL DIMENSIONS		
Dimensions 400 Series Control Unit	182 x 115 x 34 mm	
Shipping Weight	2 kg.	
PHYSICAL MATERIALS		
400-WM unit: ABS plastic. Transducers PEEK and Acetal with aluminium/stainless steel mounting block/rails. All materials corrosion resistant in most outdoor applications (not Marine).		

DIMENSIONS.

www.1-flow.co.uk sales@1-flow.co.uk

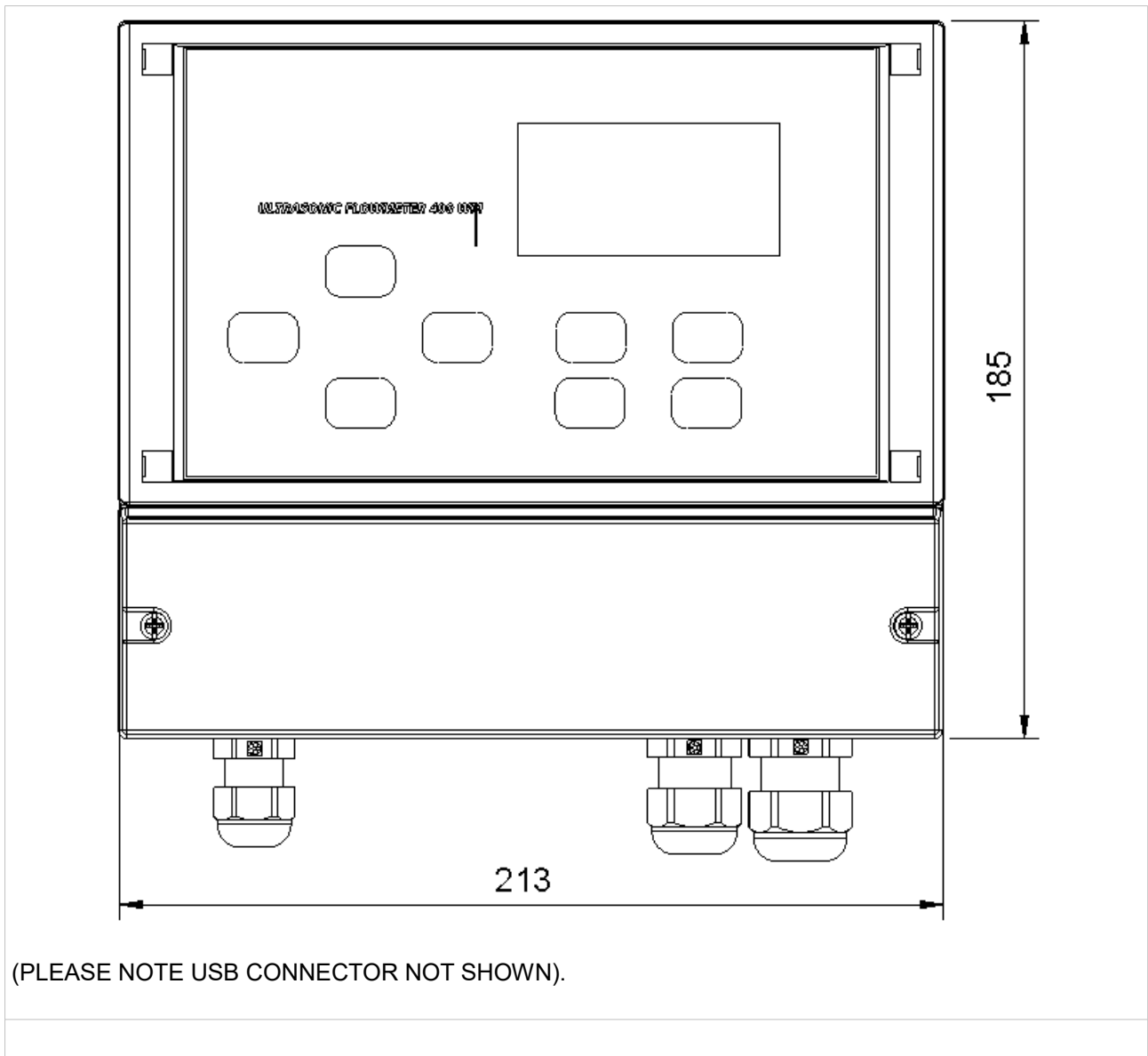
ONEFLOW TECHNOLOGIES LTD. 4 Devon Units, Budlake Road, Marsh Barton Trading Estate, Exeter, EX2 8PY.

Tel: +44 (0)1392 829926.

Page 7 of 9

Datasheet
400-WM Portable
Ultrasonic Flowmeter

vr 1.0a, 9/12/2016.



Kit contents

- 1 x Main Electronics units
- 1 x pair of sensors
- 1 x clamping rail
- 1 x 250 mL water based couplant
- 1 x 4GB USB stick with manuals and calibration certificate.
- 1 x bubble level
- 1 x 5 metre retractable tape measure

Many thanks for taking the time to read this data-sheet and considering a ONEFLOW Technologies

www.1-flow.co.uk sales@1-flow.co.uk

ONEFLOW TECHNOLOGIES LTD. 4 Devon Units, Budlake Road, Marsh Barton Trading Estate, Exeter, EX2 8PY.
Tel: +44 (0)1392 829926.

Datasheet

400-WM Portable

Ultrasonic Flowmeter

vr 1.0a, 9/12/2016.



product. Please contact us or one of our representatives for further information.